



ab.Finance is an innovative and fully integrated financial management application suite for today's e-business. It provides powerful but easy-to-use financial tools for organizations of any size. It is tailored to the needs of any organization seeking to take advantage of the Internet. This improves the agility of people to access important corporate information anytime, anywhere.

ab.Finance, specifically designed for advertising agencies, PR agencies and media, gives your organization much more than cost history, delivering up-to-date information on costs, projections, commitments, and changes to manage the profitability of projects. It is designed to give executives, financial controllers, accountants, project owners and project managers timely, accurate information on the progress of jobs in formats that are useful to them.

ab.Finance equips with features like automatic invoice processing, accounting control and customer control. These features will dramatically reduce settlement cycle times and lower the administrative cost. On the other hand, this application will free your accounts receivable professionals from administrative tasks so that they can spend more time on value-added activities like payment terms analysis, credit management, receipt analysis, and revenue management.

ab.Finance helps you to manage your procurement cycle effectively by allowing you to process increasingly higher volumes of transactions while maintaining accounting control, and increase visibility

into your cash flow. Through the improved process management, **ab.Finance** helps you to minimize the expensive and error prone process of manual data entry so that you can spend more time on analyzing your business and focusing on customer service.



General Ledger Module

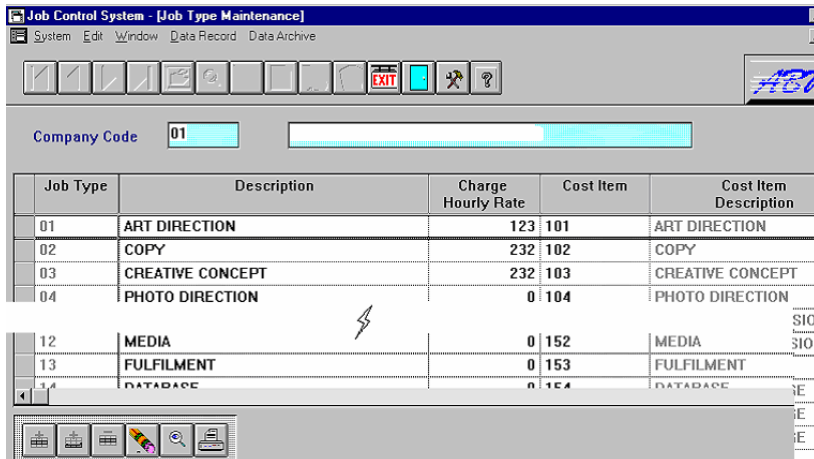
ab.Finance General Ledger Module is the foundation of the system. Its built-in flexibility meets both the current and future financial needs of organizations of all types and sizes. It provides a robust feature set designed to meet even the most demanding budgeting and processing needs. The built-in financial reports provide you with a timely picture of your company's fiscal activities. General Ledger fully integrates with all **ab.Finance** modules and is the key to maximizing the efficiency and accuracy of your financial data.

In General Ledger Module, you can build custom financial reports such as balance sheets and income statements without any programming using **ab.Finance** General Ledger's Report Writer. You can define reports on-line with complete control over the rows, columns and contents of your report.

Accounts Payable Module

ab.Finance Accounts Payable Module provides robust accounting features to streamline your entire cash flow process and help you save money. It provides strong financial control so that you can prevent duplicate payments, pays for only the goods which your company has ordered and received, and

maximize supplier discounts. The powerful Accounts Payable library of accounting and reporting features facilitates rapid entry of vendor invoices and flexible cash disbursement. With this



Job Control System - [Job Type Maintenance]

System Edit Window Data Record Data Archive

Company Code 01

Job Type	Description	Charge Hourly Rate	Cost Item	Cost Item Description
01	ART DIRECTION	123	101	ART DIRECTION
02	COPY	232	102	COPY
03	CREATIVE CONCEPT	232	103	CREATIVE CONCEPT
04	PHOTO DIRECTION	0	104	PHOTO DIRECTION
12	MEDIA	0	152	MEDIA
13	FULFILMENT	0	153	FULFILMENT
14	DATABASE	0	154	DATABASE

comprehensive financial management tool you can prioritize payments, negotiate terms and reduce bad debts. With its powerful accounting and reporting features, Accounts Payable makes it easier to manage the detailed information your company requires.

Accounts Receivable Module

ab.Finance Accounts Receivable Module is a full-function accounts receivable system that improves your company cash flow and handles all of your invoicing needs. It allows you to manage your customers and fine-tune customer relations by keeping track of important sales information and outstanding balances. It gives your

the accounting. Powerful on-line tools help you to track, monitor, and collect your receivables, and reduce your delinquent accounts.

Project Costing Module

ab.Finance Project Costing Module provides a completely integrated cost management solution for all the projects and activities across your enterprise with the ability to cross currency and organizational boundaries. Line managers are empowered with timely, detailed cost information to monitor project performance in a format that optimizes their productivity, while financial managers track the total cost of running the business.

Project Management

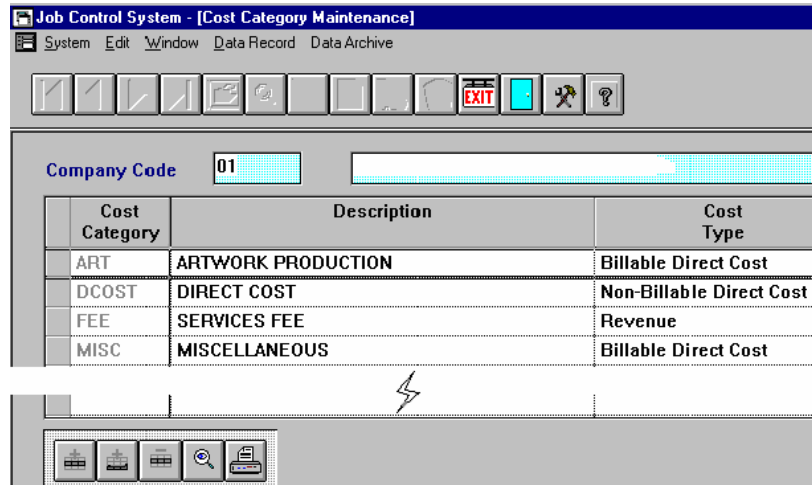
ab.Finance Project Management Module tightly integrates with Microsoft® Project 2002 and other modules of **ab.Finance** seamlessly. It links data between them and creates jobs and entries in **ab.Finance** automatically through the Microsoft Project interface. RFP will be generated under the selection of users and the built-in workflow engine will send RFP to the selected suppliers through e-mails. Cost items will be updated in **ab.Finance** through the module over the web by suppliers. Finalized data will be synchronized between Microsoft Project and **ab.Finance** and project managers are ready to start the project. The built-in workflow engine streamlines working orders in Microsoft Projects. It automates tasks in Microsoft Project, notifies users on any activities and sends approval

Debtor (Customer) Details Aging Report									
Customer Code From [9009] To [9009] Cut off Date [18-Mar-1999] [Cut-Off-Date]									
Date/Time:	18-Mar-1999	2:58:53 PM				Page	1		
Program ID:	ARR073	/ A/R				User ID :	ABWIN		
Doc. No.	P.Date	Overdue Days	L/C Balance	Below 30	31-60 Days	61-90 Days	91-120 Days	Over 120	
Customer Code 9009									
Document Type									
01-INV-00004/99-0317-Mar-99	1	1,000.00	1,000.00	0.00	0.00	0.00	0.00	0.00	
01-PRD-00001/99-0316-Mar-99	2	75,800.00	75,800.00	0.00	0.00	0.00	0.00	0.00	
97/10232	31-Oct-97	503	65,000.00	0.00	0.00	0.00	0.00	65,000.00	
97/10233	31-Oct-97	503	645.52	0.00	0.00	0.00	0.00	645.52	
97/11018	30-Nov-97	473	4,452.50	0.00	0.00	0.00	0.00	4,452.50	
1983184	31-Dec-98	77	5,230.00	0.00	0.00	5,230.00	0.00	0.00	
1983206	31-Dec-98	77	13,597.00	0.00	0.00	13,597.00	0.00	0.00	
1983207	31-Dec-98	77	16,730.00	0.00	0.00	16,730.00	0.00	0.00	
Document Total :			1,827,576.85	76,600.00	0.00	280,904.00	83,381.00	1,386,691.85	
Total :			1,827,576.85	76,600.00	0.00	280,904.00	83,381.00	1,386,691.85	
Total :			1,827,576.85	76,600.00	0.00	280,904.00	83,381.00	1,386,691.85	

requests to senior management for important events. This increases efficiency and increases the visibility of the projects you are working on.

Complete control over your inventory – including up-to-the-minute notification of when replenishment is needed and a full

processing of payroll earnings and expenses. And information is stored by calendar month, quarter, and year, so you can prepare accurate and timely reports.



System Administration Module

The System Administration Module controls access to all **ab.Finance** modules and information. It is the hub from which all other modules operate and affects nearly everything you do in **ab.Finance** – from establishing security to setting up profit centers. The System Administration Module includes tools to ensure data integrity and complete processing. It allows you to manage multicurrency (additional licenses required), profit centers, multicurrency, users security and groups security.

Client Profitability Module

Client Profitability Module gives you're the benefits:

- Measure customer profitability & cost analysis
- Client profitability items (CP Items) analysis
- Provide information to the Account Executive to support pricing of services
- Allows your company to work with customers in a strategic partnership to lower the overall cost of services
- Understand the costing details of each project (from cost type, number of hours used, number of people used, etc.)
- Provide information to management to pinpoint opportunities for cost reduction and improve project profitability

Inventory Control Module

ab.Finance Inventory Control Module gives you accurate and immediate information on the quantity, location, condition, status and history of any item in your warehouse at any time. Fully integrated with **ab.Finance**, the Inventory Control module ensures complete control and flow of information between the back office and warehouse floor. A browser-based interface provides the ability to generate reports and track inventory movement across the enterprise.

audit report of every product moved through your warehouse—gives you a clear picture of what is going on in the warehouse, and allows you to reduce 'just in case' inventory levels. With less capital tied up in inventory and the possibility of reducing the amount of needed warehouse space, this can amount to a huge bottom-line savings. Also, with complete inventory control management (down to the contents of particular bins), you will never send a picker to an empty bin—increasing productivity, saving on warehouse labor costs. Precise up-to-the-minute inventory control helps you keep up with the fast-pace of e-business, enhancing the effectiveness of your Web store operations and overall customer service. **ab.Finance** Inventory Control module supports FIFO (first in, first out) stock rotation, serialized inventory, and lot and expiration date tracking – the ensure complete control over the shipped product.

Payroll Module

Payroll module can help you make payroll and benefits administration a smooth, predictable, and timely process, rather than the frustrating, error-prone, administrative nightmare that it so often becomes. It tracks detailed information to process payroll for hourly, salary, and exception employees. It allows employees to be paid on weekly, bi-weekly, semi-monthly, or monthly intervals. Unlimited earnings types and deductions allow for accurate

Reporting and Data Analysis

ab.Finance provides the strongest reporting and data analysis tools ever in the market. Standard Reports, Web Reports and OLAP Reports expand the visions of different people who need different information in the organization. From project to company wide profit and loss details, these reports will give you any information you want. GL Report Writer will also give you flexibility to customize your required format of balance sheet and profit and loss statements.

ab.Finance Features:

General Ledger Module

- Powerful budgeting functions, support multiple years, version control, and Excel file import, etc.
- True support of multicurrency (use one account code with multiple currencies)
- Customize reports with General Ledger Report Writer (design your own formats of reports)
- Ability to drill down to originating transaction in other modules
- Provides details of transactions from employee, customers, protects to used-defined analysis code

Accounts Payable Module

- Strong built-in payment checking mechanisms, reduce the possibility on duplicate payment
- Ability to support single payment for multiple purchase invoices
- Support advanced payment
- Full multicurrency support
- Complete reporting library

Accounts Receivable Module

- Flexible invoice and cash processing
- Ability to deliver multiple invoices to different people within a single AR account
- Support Agent Model
- Support Parent-Child relationship
- Record to CIA during invoice creation
- Quick review and analysis of receivables
- Complete reporting library
- Full multicurrency support

Project Costing Module

- Supports Projects Grouping
- Supports Production and Media invoice type
- Unlimited Estimations and Quotations
- Web-based Customer Quotations Approval
- Cost items creation within projects
- Enables your employees to enter and submit project-related timesheets
- Drill down from projects to expenditure details on-line

Project Management

- Integration with Microsoft® Project 2002
- Data synchronization between Microsoft Project files and **ab.Finance**
- Automatic jobs/projects creation
- History cost estimation
- RFP/Quotation generation
- Payment Scheduling
- Integrated workflow engine for e-procurement engine
- Customizable workflow definition for every task in Microsoft Project 2002
- Workflow integration with suppliers and customers for RFPs requests and quotations approval

- Detailed Gantt chart presentation of project details and cost

Client Profitability Module

- Central information system about your clients (not just only projects)
- Measures customer profitability & cost analysis
- Measures the investments of your organization to customers (including all activities with the customers)
- Activity-Based Costing – Detailed records of “other expenses” of your clients
- Client profitability items (CP Items) analysis

Inventory Control Module

- Supports multiple locations
- Supports FIFO (first in, first out) method
- Supports serial number and lot management
- Ability to manage, monitor and alert stocks with expiration date requirement
- Supports size, color, quality and price grouping and mixed grouping
- Supports customer and supplier item number format and provides conversion functions
- Provides scan and print barcode functions and supports many barcode formats
- Supports customers' brand name products
- Supports suppliers' OEM products
- Complete inventory report library

Payroll Module

- Supports company internal provident fund and Mandatory Provident Fund (MPF)
- Supports different levels of pay scale
- Supports hourly rate, daily rate, monthly salary, and per unit salary rate
- Provides holiday and leave management functions
- Ability to print pay slip
- Supports banks autopay functions
- Provides information for tax return
- Supports multiple locations
- Supports time recorder and check-in/check-out system integration
- Complete employee and payroll report library

System Administration Module

- Set up and maintain multiple companies in the system
- Set up and maintain multiple currencies and currency exchange rate tables
- Set up and maintain profit centers
- Set up and maintain users and groups security to control access to modules, specific functions and information

Business Oriented Systems, BOS, and Bring Values to Your Businesses are trademarks of Business Oriented Systems Company Limited. Microsoft, Windows and Excel are registered trademarks, and SQL Server is a trademark of Microsoft Corporation. All other trademarks acknowledged. © Business Oriented Systems Company Limited 2002. All rights reserved. Printed in Hong Kong 06/02. This document is for informational purposes only and is subject to change without notice. BOS makes no warranties, express or implied in this document. The contents of this document are believed to be current and accurate as of its date of publication. For a complete description of the product features, please refer to the product's user guides, reference manuals and release notes. Companies, names and/or data used in screens are fictitious, unless otherwise noted.